

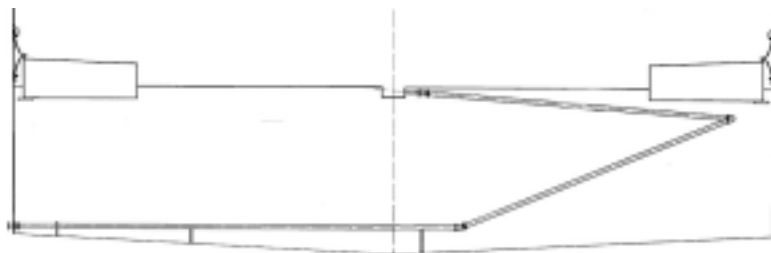


CTS DRAIN PIPE SYSTEM FOR EXTERNAL FLOATING ROOF TANKS

Draining rain water from an external floating roof is one of the most important aspects of long term maintenance. A tank drain can only be replaced when the tank is out of service and the consequences of a malfunctioning tank drain could be significant. To ensure proper draining of rainwater and a long service life CTS has developed a tank drain pipe system, with high quality swivels for this application. The swivel design guarantees a long service life, therefore eliminating much of the potential problems. The CTS drain pipe system is a complete system, including the connections, the all important swivels and the pipe work. It is ready to be installed by a (contractor) crew. All our systems are extensively tested prior to shipment, to ensure their performance. Our swivels will guarantee a long-term adequate performance of the drain system.

Drain pipe assembly features:

- pressure tested and certified, before shipping and, if required, after installation
- able to deal with 100% aromatics
- high quality swivels
- special swivel design for submerged use
- continuous slope, no trapping of liquids
- fast and easy installation
- long service life
- fast delivery



Roof Tank Drain swivel, Specifications:

Product description: Drain systems designed for immersion inside storage tanks to drain rain water from a floating roof

Sizes: 2", 3", 4", 6", 8", 10" and 12" (ANSI flanges), other sizes available on request

Swivel design: U-shape swivels for submerged use, friction free design

Swivel seals: Elastomeric seals, temperature range 0-125°C, special compounds up to 310°C available

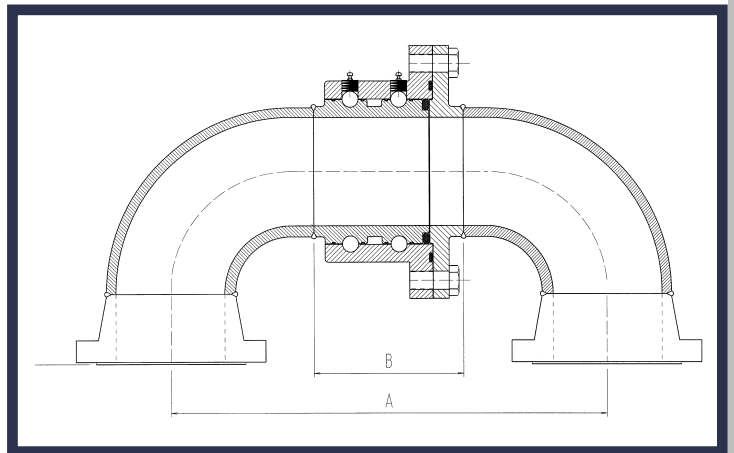
Swivel Materials: Aluminium, stainless steel, carbon steel

Pressure: Although these swivels are rain water drains experiencing low pressures when in use, the integrity of the swivels is checked, after assembly, by testing to 10 bar with water. Test and material certificates are supplied as a standard

Swivel dimensions:
(see drawing)

Bore size (inches)	Size A (mm)	Size B (mm)	Seal type (standard)
3	248	114	O-ring
4	324	146	O-ring
6	384	178	O-ring
8	533	241	O-ring
10	667	305	O-ring
12	800	356	O-ring

Flanges: Generally steel ASA150 R/F flanges are supplied. Other flange drillings and materials are available



Our swivel design ensures an adequate long term performance of the drain system.



Offices:
Coventrystraat 2
3047 AD Rotterdam
The Netherlands

Tel.: +31 (0)10 - 2622160
Fax: +31 (0)10 - 2622190
E-mail: info@cargotransfer.net
Website: www.cargotransfer.net

Your distributor: