



VERHOEF ACCESS TECHNOLOGY

GLOBAL STANDARD IN
DESIGN AND FABRICATION OF
GANGWAY SYSTEMS

AGENT FOR AUSTRALIA & NEW ZEALAND

SHIP & **SHORE**

www.shipandshore.com.au

CUSTOMER FOCUSED-SOLUTIONS DRIVEN

VERHOEF ACCESS EQUIPMENT MEETS CUSTOMER REQUIREMENTS AND LOCAL CONDITIONS

During the years Verhoef has developed three different designs. Each design can be fine tuned to be in line with the site data and ranges of ship deck levels and meet any other customer specific requirements.

Basically, there are three main designs:

- Column type
- Tower type
- Riding type



Column with telescopic gangway, stowed parallel to the berthing line. Valdez - Alaska



Clearly labelled handles on the Verhoef control panel make the gangway system easy to operate. Puerto de la Cruz - Venezuela



Gangway tower with floodlight support. Curacao - Dutch Antilles

THE MAIN FEATURES OF THE VERHOEF ACCESS SYSTEMS

- Standard systems adaptable to meet specific requirements
- Fully automatic 'free-wheel'-system which allows the telescopic gangway to accommodate ship- and tidal movements (up/down, in/out and slewing horizontally)
- Telescopic gangways with self-levelling steps or fixed anti-slip walking surface
- Hydraulic control panel which make the gangway easy to operate
- Explosion-proof electrical systems
- Proven design, carried out in high grade steel and aluminium
- Optional: stores cranes, control cabins, fire monitors (either mounted on top or as a separate unit)



Multipurpose gangway tower with liftplatforms, telescopic gangway, hydraulic stores crane, control cabins and fire monitor columns. Shanghai - China



Riding ladder positioned on LNG tanker. Woodside - Australia



Riding ladder, hydraulically operated. Antwerp - Belgium



Riding ladder handled by crane. Singapore



Verhoef's modern production facilities ensure an efficient manufacturing process.



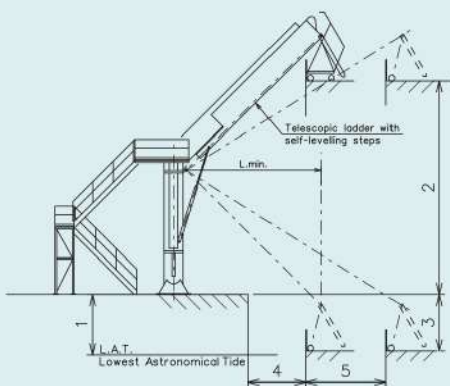
All Verhoef Access Systems are shop-erected and fully tested before delivery, through which a quick commissioning of the equipment at site is guaranteed.



Verhoef provides customer support around the world including sales and technical assistance, training and maintenance.

LIFETIME EXTENSION AND PROGRAMMES FOR UPGRADING

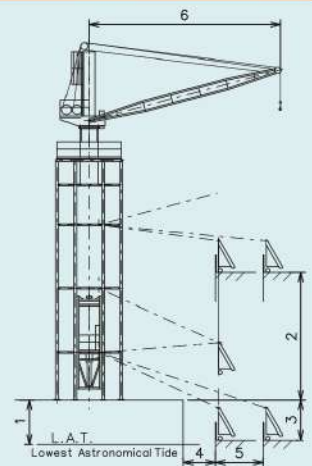
Verhoef also offers lifetime extension including upgrading of existing gangway equipment. Please contact us for more information.



QUESTIONNAIRE

In order to make a proposal for you, we would need the following information:

1. Height of jettydeck above L.A.T.
2. Maximum tankerdeck level above jettydeck
3. Lowest tankerdeck level below jettydeck
4. Distance between jettydeck and tanker
5. Drift dimensions
 - a. longitudinally direction
 - b. cross direction
6. Additional requirements (please specify) like firemonitor foundation, crane etc.



VERHOEF ACCESS TECHNOLOGY

VISITING ADDRESS: MOLENWEG 125 | 1436 BS AALSMEERDERBRUG |
 POSTAL ADDRESS: P.O. BOX 260 | 1430 AG AALSMEER | THE NETHERLANDS |
 T. +31 (0)20 3167100 | F. +31 (0)20 6534747 |
 WWW.VERHOEF-ALU.NL | INFO@VERHOEF-ALU.NL |

VERHOEF ACCESS TECHNOLOGY is a registered trade name of VERHOEF ALUMINIUM SCHEEPSBOUW INDUSTRIE BV

